

Fall Newsletter, 2024, Vol. 119

Society of Layerists in Multimedia

"...the relationships in art are not necessarily ones of outward form, but are founded on inner sympathy of meaning."--Wassily Kandinsky

Message from the President

My Dearest Friends, After a very long year and a half, I find myself still standing and moving forward, due in a large part to all of the many SLMM friends who have offered so much support, inspiration and love.

We have added two new members to the Board of Directors, Jean Griffin, Oklahoma, and Cal Mahin, Kansas. WELCOME to these members! Jean is Chair of the newly redeveloped Creative Growth Committee and Cal is an active member of our Monday and Saturday Open Studio Zooms and our Tuesday sharing and connection Zooms. They will be a wonderful addition to our great team of Board members already serving our organization!

The Board and Committees are meeting regularly to create some amazing opportunities to move SLMM into the future. One of those ideas is testimonials from members on what SLMM means to them. These will be displayed on the Home Page of our website so that those checking out SLMM may see how special this organization is and to allow members to get to know each other better.

For the Home Page testimony, just a few sentences of what SLMM means to you will be great! When you finish writing your testimonial, send it to me or to Sue Burke Harrington. Here is my testimony:

SLMM offers me a tight art community that feels like a family that grows, shares and becomes stronger with each week that passes. This unique organization created by Mary Carroll Nelson, along with artist friends, is a special group layered with amazing artists, friends, support and love.

I would love to get to know all of you. You are always welcome to share your ideas, experience, and brainstorming on the SLMM Website Forum, SLMM FaceBook, Zoom or email me personally (stevensbjc@gmail.com). Let's keep the lines of communication open and STAY CONNECTED!



Blessings to you all throughout this fall season and into the New Year!

Hugs to my SLMM family,

Jo

*Barbara Jo Converse Stevens
President & Membership Chair*

Thoughts from your Newsletter Editor:



As one newsletter is finished, it seems another one is started. Time just has a way of flying by! Our team of board members, officers, and of course, our amazing Executive Administrator, Karen Van Hooser and our talented Web Administrator, Susan Dreiling, make my job fun. Well, sometimes! It depends if my computer and software are behaving! I just love getting the submissions to the newsletter as this is when I feel a real connection to our membership. I definitely love it when I see a member on a Zoom meeting. I know, it's not exactly like we can give each other a hug, but it gives me a lift when I hear their voice and see their smile.

As you probably know by now, I have been a member of SLMM since 1990. I saved every newsletter I received and placed them in a binder. It took me some time, but I scanned all these issues and Susan Dreiling put them on the website. You can now go back and see for yourself just how SLMM developed over the years. I sure wish we had the newsletters from 1982-1990. I became the Newsletter Editor in 2015 and this will be my 20th issue!

Looking Back in Time

The annual conference was held at the Pink Shell Beach & Spa Resort in Fort Myers, FL, Ap 23-27, 2008.

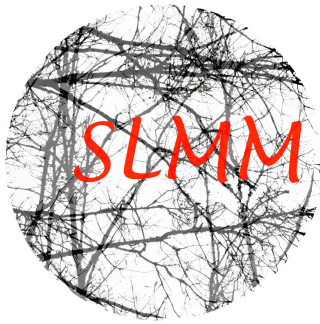


The 2008 issue of the newsletter reported that Dick and Sheli Newman outdid themselves in planning a deeply wonderful experience for the 29 who attended the conference. Fifty SLMM members showed artwork in an exhibition titled "Illumination" that was held in the Sidney and Berne Davis Art Center. A bonus of having a small group was that each artist stood by their work and discussed their art with the group. The photo, provided by Richard Newman, was taken on the steps of the Art Center. Nancy Dunaway, president, reported that the conference was small but very productive and enjoyable. The \$350 conference fee included six meals, bus trips, Gulf Boat Cruise with Island excursion, Naples Art Museum visit, gratuities and lodging was \$179 per night plus taxes.



In 2016, SLMM had its conference in Asheville, North Carolina. Those of us who attended are reminded how things can change in a flash. The recent Hurricane Helene damaged an estimated 80% of the buildings in the River Arts District. Buildings were swept away and some galleries no longer exist. It is beyond comprehension that so much was lost. Prayers go out to all those affected. On the left, Laura Pope and Nancy Nikkal visit with one of the artists in the River Arts District. The photo on the right shows Kathy Farr, Linda Penrod and Ann Hartley at the registration table. It was at this conference that the SLMM book, *Unique Insights*, was unveiled.





Circle of Prayer

We offer prayers for members who have passed and those going through difficult challenges. Our hearts go out to everyone impacted by the recent hurricanes, fires and natural disasters. Keep our treasured members and their families in your healing light.

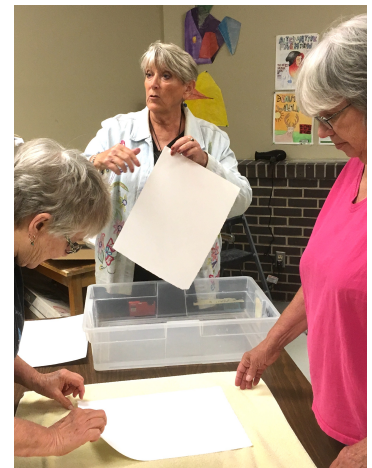
Welcome New Members

Dorothy (Dottie) Staab, Hays, KS, Darlene Southworth, Ashland, OR and Robin Valenzuela, Garden City, KS.

Welcome back, Jennifer Zoch Selewach, Giddings, TX. *We are so glad to have you back.*

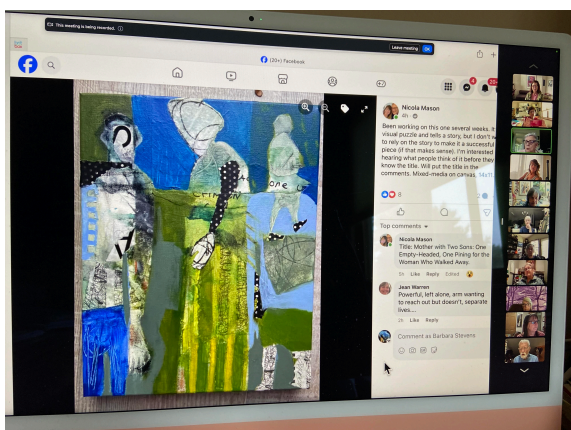
The Membership Committee, chaired by Barbara Jo Converse Stevens, is starting its 2025 Membership Drive in January, so this is a reminder to start talking to your artist friends about SLMM and remind them that **IF THEY JOIN IN JANUARY, 2025, THEY GET 6 MONTHS FREE MEMBERSHIP!** Please help us spread the word about SLMM at gallery openings, art meetings, schools, workshops, etc. Our goal is to increase our membership to 200 from our current 132 membership. It would be great if every member would bring in ONE NEW MEMBER in 2025! Start connecting with other artists to promote SLMM now. *If you know of artists, musicians, dancers, actors, writers...encourage them to join SLMM.*

Here is how to recruit members! I was teaching a watercolor monotype workshop in Great Bend, KS in 2018 when one of the enrollees jumped into action when she saw I could use some help. That person was Barbara Jo Converse Stevens, now President of SLMM. I was impressed with her enthusiasm, willingness to help and her artwork produced at the workshop. The conversation went something like this, "Have you heard of SLMM? You might want to check out the website. I believe you would make a great member." Barbara Jo didn't hesitate to follow up on my suggestions and joined! Here is a photo of Barbara Jo assisting me at the workshop.



Zooming is still popular and so much fun! If you haven't jumped on board yet, consider this your invitation. Here is a screenshot of a recent Tuesday Zoom meeting.

Nicola Mason needed some feedback on a painting so she put it on the SLMM's Facebook page, making it possible for other members to see it, write a response and make suggestions. She also attended the Tuesday Zoom meeting to discuss the work "live" with other members, getting lots of feedback. The exchange of valuable information helped Nicola proceed with her painting. This is just one example of how members connect and share!



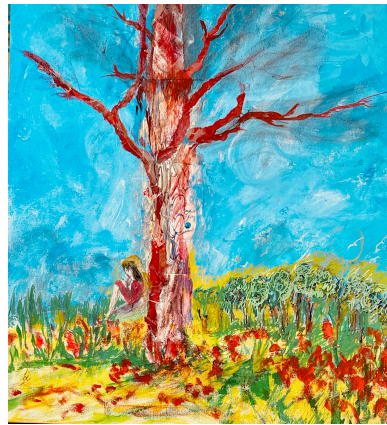
If you are free on Tuesday's at 1 pm Central, you can get in on the live discussions by connecting through the SLMM calendar on the Home Page. Personally, I have learned so much by listening to the SLMM members discuss the artwork. Also, I get some laugh therapy! These artists love to share and care so much about one another. It is a highlight of my week!

Member News

Jaleh Etemad

Jaleh's latest news is she is working on creating an art book archiving her artwork of the past 35-plus years entitled *Art of Life*. Her daughter, Nakissa, whom some of you have met at past SLMM conferences, has been working with Jaleh as her book editor, helping compile 250 art pieces and place them into 14 chapters according to series or types of artworks. It will be a hardcover coffee table book of about 200 pages, in part inspired by the SLMM book, *Unique Insights*. Once it is published, Jaleh will share a link to purchase the book. "We hope to have it ready in time for the winter holidays in hopes it can make a nice gift for your friends and family. More to come soon."

Jaleh says it has been a great year so far for SLMM artists as we have stayed connected through our Zoom meetings in fun and provocative ways with our art, even though we haven't been together in person. We have shared our talents and creations with so many fantastic artworks. The connection I feel with this group has been my inspiration in life."



On the far left is *Good Morning Sunshine*, 12"x12" collage on wood with acrylic, book pages, paper and sheet music, created in 2023.

Book of Dreams, 24"x24", acrylic and paper on canvas, created in 2023.

Jaleh provided this photo taken at the 2018 conference in Seattle-Tacoma. "Both Marilyn Christensen and Mary Carroll Nelson (founder of SLMM) have passed away and we miss them so much."



Catherine Fraser

Catherine reports that it has been beautiful where she lives in Canada. She has been busy with regional shows, being a volunteer docent at the Cowichan Public Art Gallery and traveling on a self-directed residency in Amsterdam and Arles, Avignon, Aix, Provence and the surrounding area this past summer. Coming up she'll have her studio open for the Fall Studio Tour of Cowichan Artisans on the weekend of October 26-27.



Catherine had a wonderful two weeks in June following the footsteps of Van Gogh in Amsterdam and Arles on her self-directed residency. Her paintings depicted some of the very same places that Van Gogh painted. One of her artworks was of the very same bridge Van Gogh painted on the Le grand Rhone in Arles. She also created a sketch of St. Remy Mental Hospital where Van Gogh lived a year.

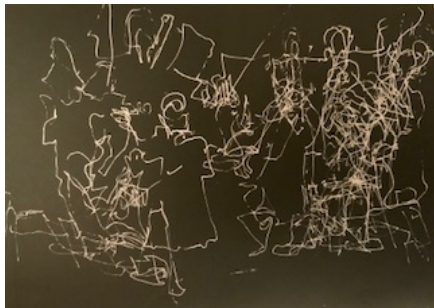


The visit to Amsterdam included seeing museums and drawing some of the sights. To the right is a drawing of some of the many wonderful buildings along the canals.



On the left is Catherine's painting depicting the view outside her studio in Cowichan Bay, British Columbia, Canada. She welcomes SLMMers wanting to visit her studio.

The drawing on the bottom left was created while Catherine was at the Symphony. *I can hear the music!*



On the right, Catherine is making rubbings in Arles, France. Many of these rubbings will become backgrounds for her paintings.

Thanks, Catherine, for sharing a bit of your residency experience. It had to be so exciting for you to walk in the footsteps where Van Gogh created his art.



Jean Griffin

Jean, Chair of the Creative Growth Committee, writes "We hope you all received your 'How to SLMM' packet! Kathleen Kuchar, Beth DeMont and I envision the purpose of our new committee as twofold: to help SLMM grow, and most importantly to help inspire each member on their creative journey. We are currently developing strategies for both and will spread the word soon. We always welcome emails sent to jeangriffincollage@gmail.com with suggestions or ideas on how we can help you. Until next time, let's get connected and stay creative."

Jean has been actively exhibiting her artwork and recently won a First Place Award in the Professional Division at the Arts 302 Gallery in Broken Arrow, OK. The title of the work is *Hanging Clusters* and is mixed media.



Bix Griffith

Our youngest member, 17-year-old Bix Griffith, daughter of Nicola Mason and granddaughter of Georgia Mason (three generations of SLMMers), is showing 30 artworks in her first solo exhibition called "Creature Comfort". It can be seen at the Sidewinder Coffee in Cincinnati, Ohio, through the end of November. It opened October 1st with an artist's reception, good attendance and some sales! [Congratulations, Bix!](#)



Rachel X Hobreigh and Lynn Mikami



On October 5th, Lynn and Rachel had a joint exhibition at the Helms Design Center Gallery in Culver City, CA. The Luminary Ballet performed three selections from their wonderful Led Zeppelin rock-ballet-acro-aerial-opus, "LedZAerial" directly in front of Rachel's eco-print scarves. She said it was spectacular watching the scarves flutter in the background as the dancers and acrobats flew by them!

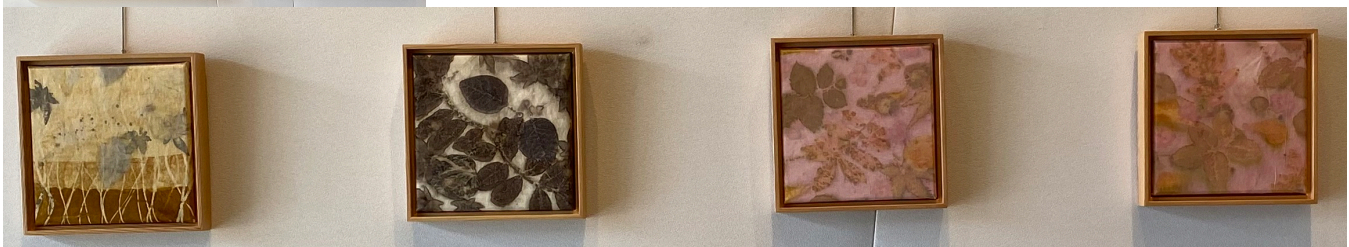


"Dancing with Silk" is a journey into the world where the spirit of nature and art coincide. It is an exhibition of wearable eco-prints on silk and mixed media. Eco-printing is a dyeing technique using renewable, sustainable, plant materials from local ecosystems. This natural dyeing method transfers the shapes, colors and marks of leaves, flowers and grasses onto fabric. Only organic materials such as silk, linen or cotton can be used. Eco-printing is all about experimenting and exploring the natural world. "As eco-printers we dive into the chemistry and behavior of the organic substances found in plants...such as pigments, tannis, and acids. Then we are able to create visual magic."



The exhibition also featured a number of Lynn's beautiful collages.

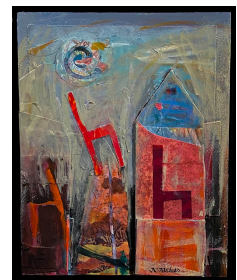
[Please send healing energy to Lynn who recently took a tumble and injured her knee. As a reminder to us all, falls can happen in a flash!](#)



Kathleen Kuchar

Kathleen has been more productive since she returned her adopted dog, Ellie, to the Rescue. Good news is Ellie was adopted by a young family with children so hopefully all is working out. "I am still finding reminders of Ellie's destruction! That green paint will never come out of the ottoman."

One of Kathleen's acrylic collages, *Ritual*, 10"x8", on the right, was an award winner at the "55th Annual Smoky Hill Art Exhibition", April 27-June 6 at the Hays Arts Center, Hays, KS. She, along with 10 other artists, was invited to a summer exhibition, "Loosely Speaking", at the Hays Arts Center. Other SLMM members exhibiting were Barbara Jo Converse Stevens, Von Pounds, and our newest SLMM member, Robin Valenzuela.



"My artwork has taken a new direction with the discovery of a pile of unfinished monotypes. I started to add some collage, color pencils, acrylics and before I knew it, I was on a roll. I have at least 50 monotypes that require some revisions, so you'll find me in the studio surrounded by scraps of paper, glue, paint and whatever it takes to make the work sing!" On the right is a 10"x8" reimagined monotype, *On Fish Patrol*."



Vicky Lennon

Vicky has been accepted as Signature Member of the National Association of Women Artists, Inc. She is honored and excited and says it took a lot of work on the business side of the art world, of which she is not the fondest.

"Thanks for all the encouragement of my fellow SLMM members, especially Liz Ruest for her comments about my website and Jo Stevens for her continued motivation as I worked on this project. The SLMM open studio time gave me the chance to get to know Liz and Jo and many other members better and share my concerns about my entry. It's nice to have fellow artists to talk to during these afternoon meetings as I work in my studio. *Yellow Door*, on the left, is one of the pieces I sent NAWA for review."



Vicky received an Honorable Mention in the recent "Jacksonville Coalition for the Visual Arts Exhibition" for *Floating through the Sunshine*, pictured on the right.



Terri MacDonald

Terri says, "The pumpkins are ready and colors of autumn are wrapping around us at the Philbrook." It was a private home built in 1928 and lived in for ten years before given to the city of Tulsa for an art museum. It is situated on 25 acres in a neighborhood. A new addition will be opened in the summer of 2025. Terri says, "Take a look at their website. It will give you a better idea of the collection and the museum and grounds. I have committed to being a docent and the training will take about one year." In the summer time, Terri also helps with the beautiful grounds. It takes a lot of volunteers to maintain the flowers, trees, shrubs, and landscape features. Terri invites SLMM members to travel to Tulsa to see the Philbrook and experience the culture of this wonderful city.

She recently won Second Place Award with a pastel assemblage in a shadow box in an exhibition at Arts 302 Gallery in Broken Arrow, OK.

Cal Mahin

Congratulations are in order for Cal. He has been inducted into the 2024 Class of "Distinguished Fellows" of the Kansas Art Education Association. This award is conferred on members who have made long-term distinguished contributions to the work of the association and to the advancement of the profession. Quoting from the letter notifying Cal, "We are very fortunate for your vision and commitment as a member of our organization as well as your lifetime dedication to the visual arts and art education. It is our pleasure to offer this highest honor to you one of our most devoted and valued members. Congratulations on being chosen to receive this most esteemed recognition from the Kansas Art Education Association."

Cal was officially recognized at the KAEA Fall Professional Development Conference on October 19th at the Rock Springs Conference Center near Junction City, KS. Along with the honor, KAEA awarded Cal a lifetime free registration to the Fall Professional Development Conferences as well as an art piece created by a Kansas artist.



As we all know, Cal Mahin is a devoted educator and artist. If you have ever attended a Zoom meeting, you can attest to his gifting of sound advice, encouragement and tips. Cal loves to share materials and must spend a lot in postage sending collage papers and other tidbits to members from coast-to-coast.

Georgia Mason

Georgia's painting, *Morning Glory*, has been selected by juror Ken Call for the "South Carolina Watermedia's 2024 National Exhibition". The paintings are on display at Burroughs Chapin Gallery in Myrtle Beach, SC through December 29.

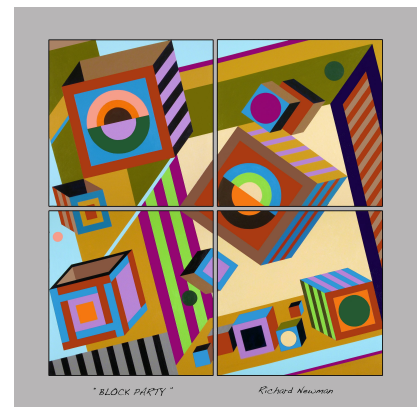


From Nov. 11-18, Georgia and her daughter, Nicola, as well as Sage Schmutz from Santa Fe and Connie Fisher from Berryville, VA will be going to "Paint With Friends" in Myrtle Beach. Since the Springmaid Workshops no longer exist, a group of artists who were faithful attendees decided to create their own event. They look forward to sharing painting space each November with friends.

PWF sounds like a wonderful way to get together and create artwork and to be inspired to try new things. Old friends and new friends say the week goes by too fast and when they pack up to go home, they are already looking forward to next year.

Richard Newman

Richard's digital print on aluminum is called *Block Party* and is 24"x24". This was originally a four-part painting measuring 50"square inches, each part 24" square hung with space in between. Newman said he took a photograph of the original and cleaned it up and manipulated it in Photoshop, altering some of the colors, sharpening the image, etc. He then went to Bay Photo.com which allowed him to pick the size, surface and upload the digital image to be printed on aluminum for around \$250.00. The print floats from the wall about a half inch.



For the newer members of SLMM, Richard Newman was our President from 1986-2004. He was in the very first exhibition SLMM put together in Albuquerque not long after Mary Carroll Nelson founded the organization in 1982. Richard was instrumental in organizing many conferences over the years and continues to create art and contribute in many ways. He and his wife, Rochelle, live in Maine. I first met Richard in 1998 when I attended my first SLMM conference in Massachusetts. Personally, I want to thank Richard for keeping the SLMM memories alive by providing some photos of past conferences. He is a link from the past to the present and is much appreciated.

For the newer members of SLMM, Richard Newman was our President from 1986-2004. He was in the very first exhibition SLMM put together in Albuquerque not long after Mary Carroll Nelson founded the organization in 1982. Richard was instrumental in organizing many conferences over the years and continues to create art and contribute in many ways. He and his wife, Rochelle, live in Maine. I first met Richard in 1998 when I attended my first SLMM conference in Massachusetts. Personally, I want to thank Richard for keeping the SLMM memories alive by providing some photos of past conferences. He is a link from the past to the present and is much appreciated.

Nancy Egol Nikkal

Nancy tells us just how much she values all the ways we connect in SLMM. "Our meetings, discussions and projects, the web gallery, website with archived images, newsletter and Forum influence me – and connect to ideas for the content for my book, for the collages and paintings I create, and the class projects I design for adults I teach. I am writing a book about collage, based on the acronym C.O.L.L.A.G.E where the first letter "C" stands for the word *connect* and the 4th letter "L" stands for the word *layer*. Chapters include: connect/organize/look/layer/add/gift/elaborate."

SLMM has been a great influence on Nancy as she tells us about the connections and sharing that happens in the group. "I offered and sent drawings to SLMM members and got some great papers in return. SLMM is about connections and sharing. I discussed how I created the lines (a transfer process) at a SLMM Tuesday Zoom meeting." Nancy has a YouTubeTutorial - "Reverse Drawing" - onsite at www.nikkal.com

The SLMM Book Club also inspired Nancy to work with inks. "We read Maxine Masterfield's book *Painting the Spirit of Nature* that includes her techniques for working with inks. Members of the Book Club created works for a project that is archived at the SLMM website." To see the artwork, go to the SLMM website and Link to News/Exhibitions: SLMM Book Club/February 2024 **Interpreting "Painting the Spirit of Nature" By Maxine Masterfield.**



“I want to see and feel connections when I create collage with papers and paint. The image here shows pasted papers with lines that connect, and colors I created with ink and acrylic. The image is 8”x8”. I used this image for a class I teach.”

Nancy definitely has been a great contributor to SLMM for many years. Personally, I gain so much from Nancy’s participation in the weekly Zoom meetings as she asks questions and loves to share information. What a joy it is to have members who never quit learning and always have the enthusiasm to grow and help others at the same time. Connecting and sharing. That is SLMM!

Karrie Steely

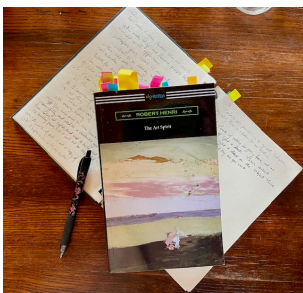
Karrie says she has been so busy that she’s been kind of invisible on SLMM. She painted a mural for the Robert Henri Museum and new art gallery this summer. Karrie discovered “The Art Spirit”, a book with the collection of his teachings, and did a lot of blogging about Henri, the mural process, and how *The Art Spirit* is informing her artistic exploration and growth. “I’ve been following SLMM and members on Facebook and through the newsletters—I am with you in spirit.”

[Karrie has written the following article that explains what she has been doing this past summer.](#)

Finding The Art Spirit

One of my projects this past summer was a mural for the Robert Henri Museum in Cozad, Nebraska. I knew immediately that this project was going to be transformational. It gave me the opportunity to learn with one of the legends of American art, and the fact that he’s been dead for almost a hundred years wasn’t a barrier. As I worked on the mural, I visited the home where he grew up, spent time in the gallery studying his paintings, and thoroughly immersed myself in his teachings. In three months I had barely scratched the surface.

A bit of background for those unfamiliar: Robert Henri, born Robert Henry Cozad in 1865, was a prominent American painter and teacher who greatly influenced the development of 20th-century art. He pioneered the Ashcan School of American Realism, which aimed to depict the everyday lives of people. Henri taught at several institutions, including the Art Students League, and inspired numerous artists such as Edward Hopper and Georgia O’Keeffe. He authored the influential book “The Art Spirit.” Henri passed away in 1929, leaving a lasting impact on American art through his contributions to realism and dedication to teaching. A little more background—Robert Henri’s original name was Robert Cozad, and his father founded Cozad, Nebraska. He spent several childhood years in Cozad until his father killed a man in a cattle dispute and fled with his family, changing their names and identities and severing their ties to Nebraska.



While conceptualizing the mural, I used his book, “The Art Spirit”, as a guide in my artistic process, hoping to incorporate some of his techniques and philosophies. I initially thought that this would be pretty straightforward, considering that the back cover of the book states that it “contains insightful and valuable technical advice for every art student.” It quickly became clear that it would take years of study to begin to come to an understanding of Henri’s applied techniques. But I read and reread the book, researched some of the archived writings, and listened to lectures in hopes of finding the *art spirit*. In the book he reassured, “I do not want to see how skillful you are—I am not interested in your skill. What do you get out of nature? Why do you paint this subject? What is life to you? What reasons and what principles have you found? What are your deductions? What projections have you made? What excitement, what pleasure do you get out of it?”

At its core, Henri’s “Art Spirit” isn’t about becoming a good artist in the traditional sense. Rather, it’s about the essential creative impulse that drives artists to create. A deep and intuitive understanding of the world, a desire to express that understanding. He believed that it wasn’t to be taught or learned through formal instruction, but

rather something that exists within the individual, needing to be nurtured and cultivated through a process of personal growth and exploration. The *Art Spirit* isn't just about creating beautiful or technically proficient works of art, but expressing one's unique perspective on the world and exploring the deeper meanings and emotions that lie beneath the surface of everyday experience. (Which aligns profoundly with SLMM!)

The mural painting process unfolded in my studio over the course of a few months. The mural was on three 8'x4' aluminum panels that I was able to set up in my studio. This was a boon, since I had air conditioning and could work whenever I wanted without distraction. I talked to Henri as I painted. I asked him questions and wondered if he would enjoy the music and podcasts that I listened to while painting. I sometimes felt his presence, chuckling at my naivety.



The mural is a snapshot of the life of 18-year-old "Bobby Cozad" (soon to be known as Robert Henri) and his life in Nebraska. It has many elements that refer to things he wrote about in a diary in that summer of 1880, as well as metaphorical imagery. Although in life, at this age he didn't know what future lay ahead of him, in this portrait he does. The figure is painting a river, which is a symbol of a life - in this case, the unknown waters of the life ahead of him. As seen in the detail below, he is facing his work, but for a moment glances out at the viewer. With a knowing glint in his eye and the shadow of a smile, he is sharing something with us. He leans casually on the frame of the



picture, as though he is aware of his two dimensional confinement but is not a captive of it. He could come out and join us if he wanted to. Indeed, he has. The legacy of the museum and his artwork in the gallery are testaments to the fact that he is still here, present through the *Art Spirit*.

I'm satisfied with the way the mural turned out, but by no means content. It was a long process, and there were some difficult times. Each day I learned something new. Everyone who sees this mural will experience it a little bit differently. When I look at it, I'll always remember the long days of exploring and experimenting with colors, unraveling the mysteries of lines, wrestling with proportions, and having the privilege to become acquainted with Robert Henri.

"No work of art is ever really finished. They only stop at good places." –Robert Henri

The mural will hang in the walkway between the Robert Henri Museum and the new Henri Art Gallery in Cozad, Nebraska when the new gallery is completed in early 2025.

To get to know Karrie better, she has provided this information:

Karrie Steely is an artist, researcher, and cultural advocate. Her creative work delves deeply into process: observation, research, experimentation, embodiment, and sharing. She and her partner live, work and create on their homestead farm on the high plains of Southwest Nebraska. Her art is inspired by life, landscapes, and found objects on the farm and on winter migrations to the desert southwest. She is actively involved with community building through the arts with the McCook Creative District, and is currently a Rural Regenerator Fellow with Springboard for the Arts. She has been accepted into the “Art Spirit - Qvarantine” program in Menorca, Spain in April of 2025, where she will be immersed in Henri’s teachings with other artists. (Qvarantine is an art community in Menorca, Spain that help artists find their voices). To see more of Karrie’s work or to contact her, visit www.ksteely.com Congratulations on this great honor! We look forward to a full report in a future newsletter.

As your newsletter editor, I am happy to inform everyone that Karrie has volunteered to be on the National Conference Committee, along with Dottie Staab, Barbara Jo Converse Stevens and Chair, Marlene Meitl. They are working on ideas for a national conference.

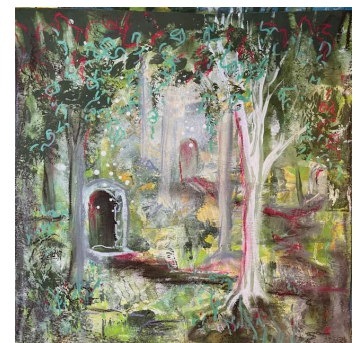
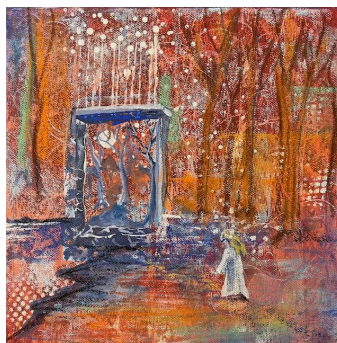
Barbara Jo Converse Stevens

This has been a busy year for Barbara Jo with fifteen shows, six of them in October! One of these was a solo show in Junction City, KS at the historic Opera House’s new gallery area. “I was honored to be one of the first to exhibit in this lovely space. It was also exciting because I got to display all brand new pieces that came from a free online workshop Liz Ruest had suggested to me. It was out of England called *Find Your Joy!* And the lessons freed my spirit as never before” Two of these artworks were *Morning Glory*, 16”x20”, Mixed Media, on the left, and *Parting the Shadows*, 24”x24” on raw canvas Mixed Media.



Barbara Jo said three months after losing her husband to cancer, she had to sell her family farm that had been in the family for six generations. “This farm, the family gathered there, the animals and my wonderful Magical Forest was a major key in forming my personality and my creative spirit. In order to feel I still had a connection to that special place, I created a series of five paintings about my Magical Forest.” These, along with five of the new landscapes, will be displayed at the Sandzen Gallery’s Invitational Holiday Show in Lindsborg, KS from November 3, 2024-January 12, 2025. Included will be *Enchanted Forest*, 10”x10” Mixed Media, on the left, and *Magical Forest*, 12”x12”, Mixed Media.

Three of this series were also featured in the “Reality Exhibition”, a virtual exhibit out of New Zealand where artists created pieces showing their own version of reality! (Go to the SLMM FaceBook site for the link to view the show).



I am including this paragraph that Barbara Jo has written to give us all a better picture of what SLMM means to her. I am sure that some of you can identify as she describes her connection to SLMM.

I live in an extremely rural area of the United States, 100 miles in any direction to a large town and 3-5 hours to a city. Artists are far and few between so showing my work to my friends is always interesting—they ‘love’ it

because they love me, but there is little discussion or interaction. When Kathleen Kuchar invited me to join SLMM in 2018, I had no idea it would be a life changing act. The opportunities that were offered to me FREE with my membership were astounding! Then the Zooms started, thanks to Terri MacDonald for that brilliant idea, and the connections grew stronger. The ties became as strong as family with people I have yet to meet in person. The exchange of ideas, experiences, feelings and support has been life changing and continues to grow and become stronger with each week that passes as I learn new information, new techniques, new products and tools, videos to watch, classes to take. This unique organization created by Mary Carroll Nelson, along with artist friends, is a special group layered with amazing artists, friends, support and love. Thanks, Kathleen, for inviting me into this amazing group! *You are welcome, Barbara Jo! Little did I know at the time that I would be recruiting a new member as well as our future president! Sometimes you just know when you meet someone for the first time that there is a deeper connection. Aren't we blessed to have Barbara Jo as our ambassador for SLMM!*

Jean Warren



Jean loves to paint 'en plein air', outdoors amongst California's hills and coastal landscapes. After retiring from teaching, she now takes a group of her former students out every week. Recently they went to an apple farm and this is the tractor from that experience.

The watercolor paper used was from an old 'start' of a painting, cropped and then became the underwash for the tractor sketch. Next she paints around or behind the drawing (negative painting), leaving the underwash visible. Layers and layers of memories and experiences

can be depicted this way, reminding us that there's more out there in that scene than what we can see! The second painting can be used as an underwash for her next sketch.

Jean Warren reminds us that if you are unable to attend the Tuesday sharing Zoom meetings (1 p.m Central time), the Pacific Coast members extend an invitation to anyone in SLMM to join their Zoom meetings. They meet on the third Thursday of the month at 4 pm (PT). Jean says "We have an inspiring time as we informally share our latest creations and ideas. Just email me jean@jeanwarren.com to have your name added to the Zoom invitation list."

Exhibition Committee

Barbara Jo is putting the word out that the Exhibition Committee needs more volunteers. The Chair is Rachel X Hobreigh. So far, only Christina Lamoureux has stepped up to help with this important committee. So, if you are wanting to get more involved in SLMM, here is an opportunity.

The committee is working on a few ideas for national shows. Rachel is exploring the possibility of a SLMM exhibition at the Helms Design Center in Culver City, CA. Once the details are worked out, she will be sending out information. Another possible show is for 2027 at the Birger Sandzen Memorial Gallery in Lindsborg, KS.

Until next time, let's all enjoy what has been gifted us. I love this photograph of our founder, Mary Carroll Nelson walking the Labyrinth at the Los Angeles Conference in 2009. The gift from



Mary Carroll of connecting, sharing and caring is well received! Pass it on! — *Kathleen Kuchar*

PS. Just had to share this photo of Penelope, 2nd grade daughter of our Web Administrator, Susan Dreiling. She's growing up fast!



President

Barbara Jo Converse Stevens

Vice President

Sue Burke Harrington

Treasurer

Terri MacDonald

Board Members

Judie M. Bordic

Jean Griffin

Cal Mahin

Georgia Mason

Nicola Mason

Jean Warren

Staff

Executive Administrator: Karen Van Hooser

Newsletter Editor: Kathleen Kuchar

Website & Web Gallery Design & Administrator:

Susan Dreiling

National Committees

Membership Committee

Chair: Barbara Jo Converse Stevens

Georgia Mason

Website Committee

Chair: Sue Burke Harrington

Liz Ruest

Barbara Jo Converse Stevens

Communication & Social Media Committee

Co-Advisors: Sue Burke Harrington, Nicola Mason,

Lynn Mikami, Barbara Jo Converse Stevens, Jean

Warren

Special Projects Committee

Co-Chairs: Judie Bordic, Vicky Lennon, Nancy Nikkal

National Exhibition Committee

Chair: Rachel X Hobreigh

Christina Lamoureux

Barbara Jo Converse Stevens

National Conference Committee

Chair: Marlene Meitl

Karrie Steely

Dottie Staab

Barbara Jo Converse Stevens

Creative Growth Committee

Chair: Jean Griffin

Kathleen Kuchar

Beth DeMont

\$500 Travel Grant Advisor for National Conferences

Lynn Mikami

EX-Officio

Mary Carroll Nelson, founder, 1982-1984

Alexander Nepote, past president, 1984-1986

Richard Newman, past president, 1986-2004

Nancy Dunaway, past president, 2004-2008

Nina Mihm, past president, 2008-2013

Jaleh Etemad, past president, 2013-2018

Laura Pope, past president, 2018-2023

Newsletter

Please submit any inclusions directly to Kathleen Kuchar, at kakuchar@hotmail.com. Newsletters are published two times a year, April and October at which time they will be emailed to all members. All newsletters are on the homepage/news/newsletter.

Next due date is April 15, 2025.

Membership Roster is published once a year in September at which time it will be emailed to all members. The membership renewal notices will be sent via email in May with a deadline to renew of July 1st. The membership term runs from July 1st through June 30th of the following year. Any updates to your contact information should be sent directly to Karen Van Hooser, Executive Administrator at karensvh@gmail.com

Membership Renewals & Applications

SLMM is a 501(c)(3) non-profit organization incorporated in the state of New Mexico in May 1982. Annual dues are \$50.00 for Individuals, additional \$25.00 for spouse/ mate. The membership term begins July 1st and ends June 30th of the following year. Membership applications and renewals are processed through the SLMM website slmm.org with the convenience of PayPal (Visa, Mastercard, Discover, American Express) to pay your dues. If you prefer to pay by check, send dues directly to: SLMM, PO Box 897, Guthrie, OK 73044.

Artist Link or Artists Page

Susan Dreiling susya.dreiling@gmail.com is the person you need to contact when submitting work for your Artist Link or Artists Page. She reminds us that it is free to have an Artist Link that gives your name and contact information and one photo of an artwork plus an optional short statement. If you want an Artists Page, it will allow more information on the website such as additional photos, a resume and bio. This will cost a one-time fee of \$60. payable directly to Susan. *You can update it often at no additional fee.*